

Avaloo Tools

Database Automation and Integration

The Database Automation & Integration module enables customers to manage their Avaloo Banking Suite development infrastructure efficiently by empowering continuous integration, providing quality assurance and allowing various automation tasks.

The tool features self-service cloning, automated quality gates and build mechanisms, as well as a cost-efficient architecture to optimally use the underlying hardware.

Overview



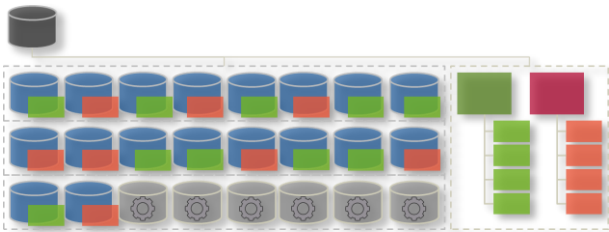
The Database Automation & Integration's graphical user interface (GUI) is integrated into the Avaloo ice Workbench. The tool is not available separately.

Key Facts

- Supporting the technical operation of the Avaloo Banking Suite instances
- Enabling customers to provide and run the Avaloo Banking Suite development infrastructure efficiently
- Reducing operation efforts
- Supporting standardised development processes
- Comprehensive self-servicing approach
- Continuous integration
- Full integration into the existing Avaloo tools landscape
- Seamless integration with external tools and processes
- Different quality management measures integrated throughout Database Automation & Integration's scope of operation

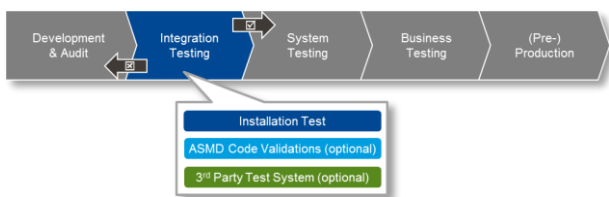
Features

Development Environment Management



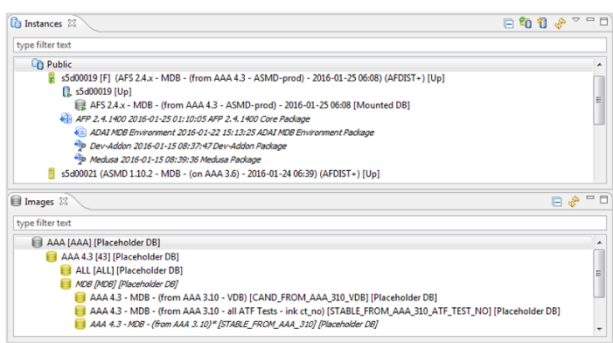
- Self-service cloning (drag & drop) for AFP and ACP environments
- Self-service server and database administration
- Fully automated build mechanisms
- Schedulable actions with notifications and alerts
- Efficient resource management
- Dynamically scalable architecture

Continuous Integration



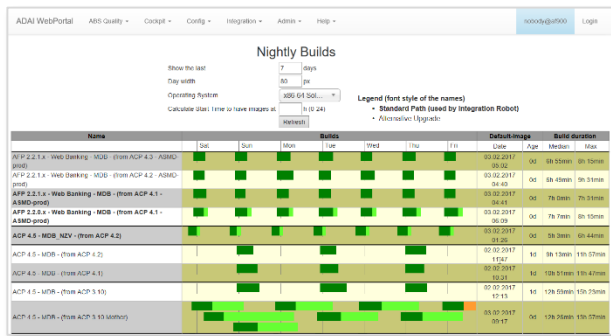
- Easily configurable quality gates via the Integration Robot
- Fully automated integration process
 - Installation Test (errors, warning, invalids)
 - ASMD code validations and checks (optional)
 - Functional test by triggering third party test systems (optional)
- Stream based builds
- Optional Delivery integration for automated ACP Kernel installations
- Comprehensive integrated scheduler and API for external schedulers

User Interface (UI)



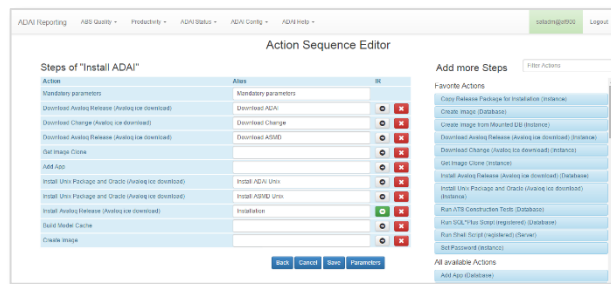
- Easy to use end user UI fully integrated into the Avaloq ice Workbench
- Integration of external tools (SmartClient, TOAD, SQL developer, etc.)
- Image and image tree administration
- Direct role and user based access administration

Application & Quality Monitoring



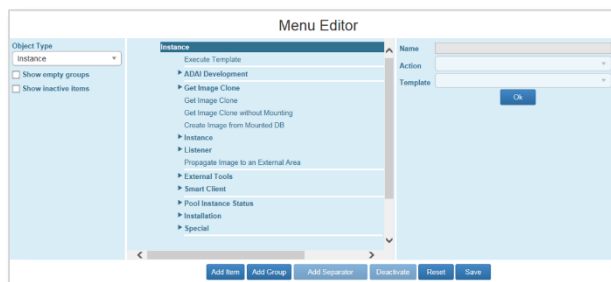
- Application monitoring
- Health reporting and alerting
- Various quality reports:
 - System status
 - Productivity
 - Code quality
 - Performance Usage

Build Management



- Action Sequence Editor
 - Intuitive creation of new builds (drag & drop)
 - Easy adaptations of existing builds
 - Real-time application of changes
- Templates
 - Reusability of common sequences
 - Bulk edit mode
 - Reusable for build integration tests (BITs)

Customisation & Role Management



- Menu Editor
 - Fully customisable end-user menus
 - Integration of action sequences and templates
- Privilege Management
 - Fine grained, role-based access control
 - Access management on template and action level