

Avaloq Tools

ice Workbench

The ice Workbench allows focusing on the customisation of the Avaloo Banking Suite by providing dedicated tooling for database development, development processes and revision control.

The tool features parallel development, guided best-practices development workflow and advanced build and deployment mechanisms.

Overview



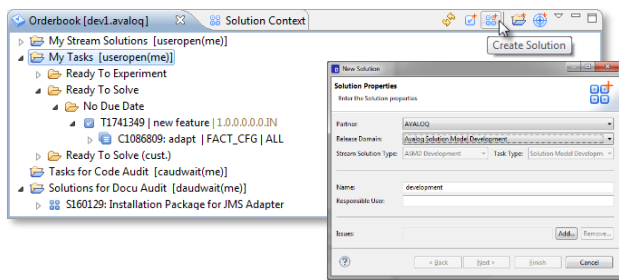
The ice Workbench is the basis of the Avaloo Tools.

Key Facts

- Client-server version control system specifically tailored for the Avaloo Core Platform
- Standardised development and release processes, incorporating software engineering best practices
- Collaborative and task-oriented development
- Parallel multi-stream development
- Monitoring and maintaining the Avaloo Core Platform development instances
- Creating and managing installation packages
- Established tool within the Avaloo Community
- Seamless integration of the Database Automation & Integration, Solution Model Development and Delivery tools at any time

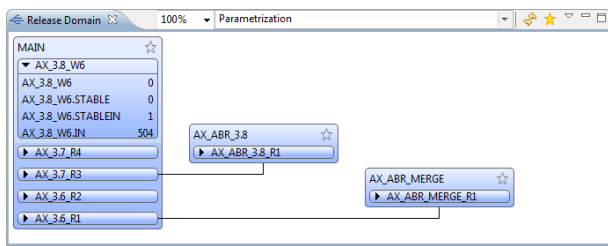
Features and Details

Revision Control



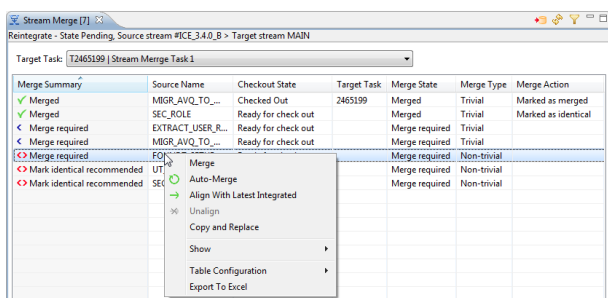
- Server-based revision control system, centrally hosted by Avaloq
- Parallel checkout and editing of multiple revisions in the same workspace
- Collaborative and task-oriented work on source revisions
- Support of multi-instance development setup (MESI, MEMI)

Multi-Stream Development



- Parallel development on different projects
- Graphical representation of release landscape
- Dependency management
- Representation of code maturity

Merge Support



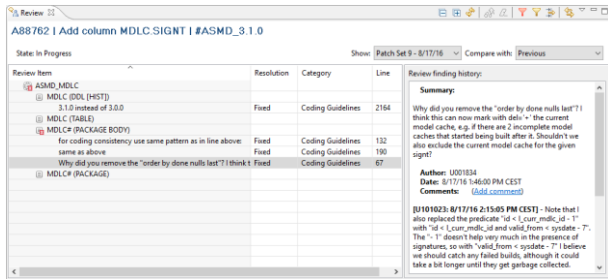
- Efficient merge tooling for multi-stream development
- Break down merge operation into logical sub-units (e.g. components or users)
- Rebase from originating stream
- Reintegrate to originating stream
- Align sources between streams
- Partly automated merging between streams

Development Process



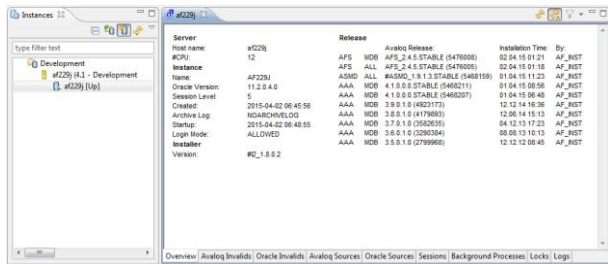
- Supports the development and change management process designed for the Avaloq Banking Suite
- Enforceable peer code review
- Role-dependent activities
- Historicised actions enabling traceability
- Pluggable check-in validations also supporting Solution Model Development validations
- Interface for third-party applications
- Avaloq-Core-Platform-customised development workflow

Code Review



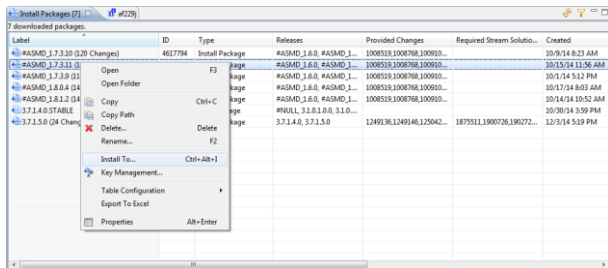
- Create findings on task, component and source level as well as per code line
- Historicised findings and patch sets for traceability
- Patch set comparisons between review cycles
- Customisable filters for reviewers
- Mark findings with resolution labels for evaluations
- Source property based automatic review finding generation (e.g. trigger additional organisational checks)

Database Development



- Monitor and manage Avaloq Core Platform instances
- Oracle Wallet support for central DB credential management
- Convenient access to instance details:
 - Release information
 - Installed sources and releases
 - Background processes
 - Sessions
 - Logs
 - Oracle and Avaloq invalids

Deployment Support



- Direct compilation
- Signed installation packages
- Drag and drop of installation packages
- Installation package key management